

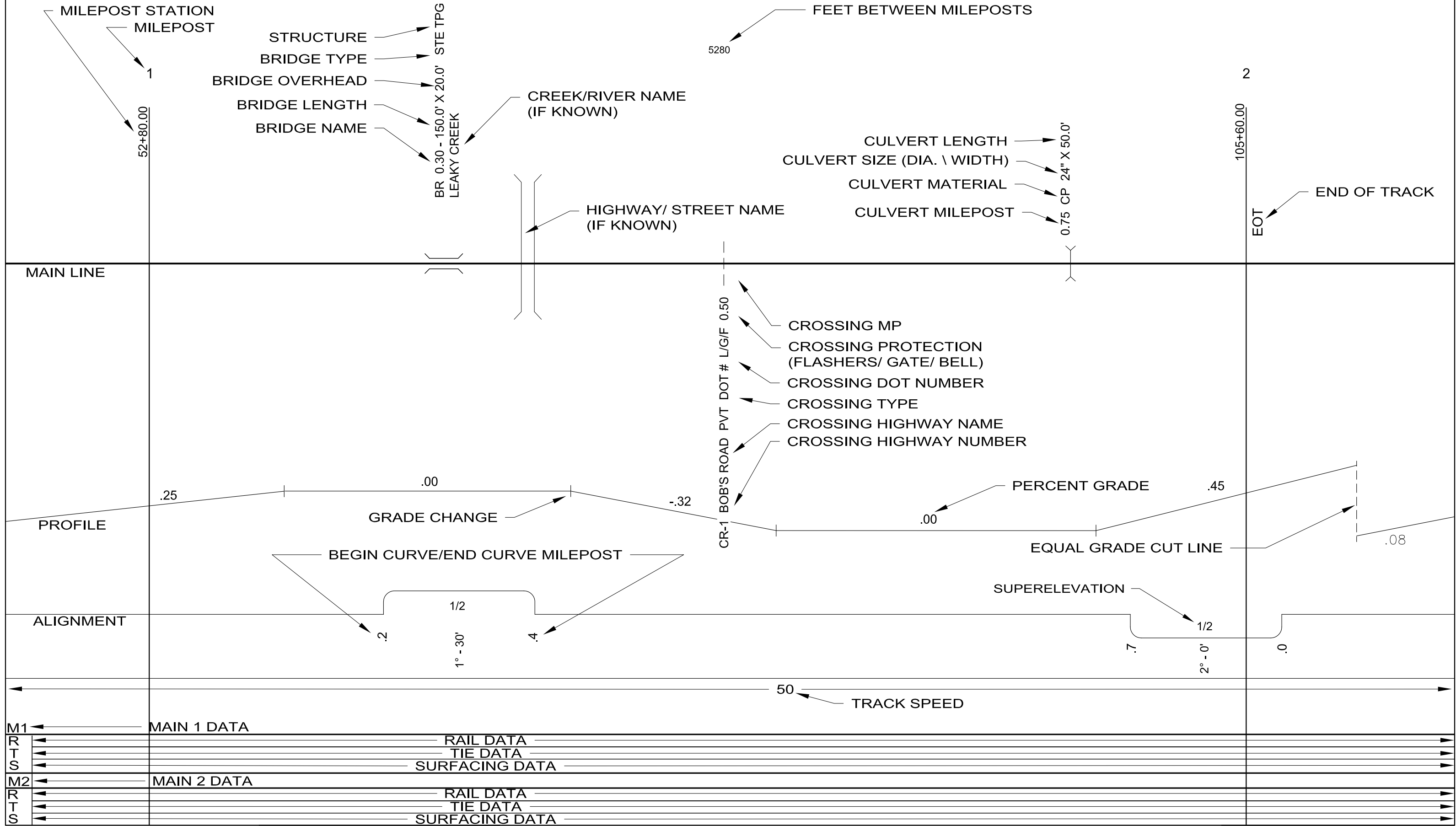
**MIDWEST ZONE/ CENTRAL DIVISION  
EFFINGHAM SUBDIVISION TRACK CHART**

**JANUARY 2015**

**TABLE OF CONTENTS**

<i>CITY/TOWN</i>	<i>PAGE #</i>
INRD JCT.	1
LIS	1
DIETERICH	3
EFFINGHAM	5

# LEGEND



MILEPOST STATION  
MILEPOST

1

52+80.00

STRUCTURE  
BRIDGE TYPE  
BRIDGE OVERHEAD  
BRIDGE LENGTH  
BRIDGE NAME

STE TPG  
20.0'  
150.0' X  
LEAKY CREEK

CREEK/RIVER NAME  
(IF KNOWN)

HIGHWAY/ STREET NAME  
(IF KNOWN)

FEET BETWEEN MILEPOSTS

5280

CULVERT LENGTH  
CULVERT SIZE (DIA. \ WIDTH)  
CULVERT MATERIAL  
CULVERT MILEPOST

0.75 CP 24" X 50.0'

2

105+60.00

EOT

END OF TRACK

MAIN LINE

PROFILE

ALIGNMENT

.25

.00

GRADE CHANGE

-.32

.00

PERCENT GRADE

.45

EQUAL GRADE CUT LINE

.08

BEGIN CURVE/END CURVE MILEPOST

.2

1/2

1° - 30'

.4

SUPERELEVATION

.7

1/2

2° - 0'

.0

50

TRACK SPEED

M1 MAIN 1 DATA

R	RAIL DATA
T	TIE DATA
S	SURFACING DATA

M2 MAIN 2 DATA

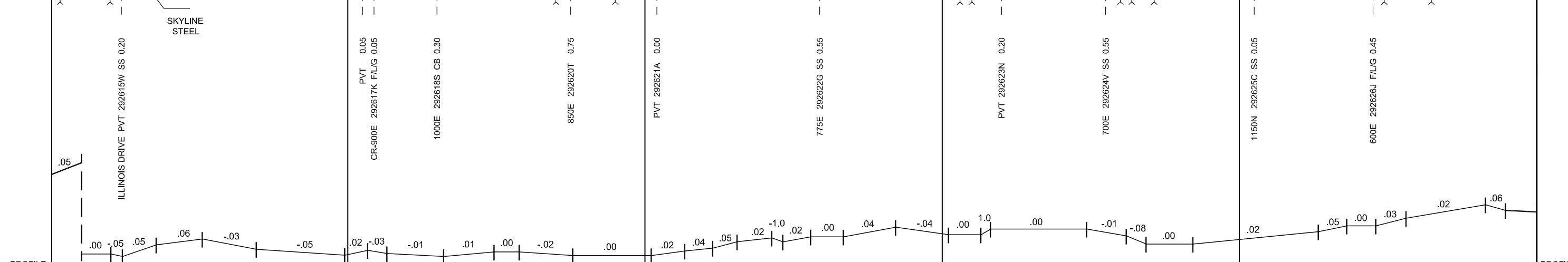
R	RAIL DATA
T	TIE DATA
S	SURFACING DATA

CR-1 BOB'S ROAD PVT DOT # L/G/F 0.50

CROSSING MP  
CROSSING PROTECTION  
(FLASHERS/ GATE/ BELL)  
CROSSING DOT NUMBER  
CROSSING TYPE  
CROSSING HIGHWAY NAME  
CROSSING HIGHWAY NUMBER

155 5280 156 5283 157 5380 158 5281 159 5283 160

8189+97 END INRD/BEGIN CN 8242+77 USGS EL. T.R. 559.0 8295+60 8349+40 8402+21 USGS EL. T.R. 559.0 8455+04



AUTHORIZED SPEEDS	40		115 CW / 1974	
M1	R	115 CW / 1974		R
T				M1
S				S
M2	R			R
T				M2
S				S

160 5283 161 5379 162 5282 163 5278 164 5277 165

8455+04 8507+87 8561+66 8614+48 8667+26 8720+03

BR 160.00 - 0' DRAIN TIM  
 BR 161.20 - 14' DRAIN TIM  
 BR 162.70 - 0' BIG MUDDY CREEK BRANCH TIM  
 BR 162.90 - 78' BIG MUDDY CREEK TIM  
 BR 164.70 - 78' DRAIN TIM

TO: MP 160.20 NO.10

WHEELER

0.40 (3)UNK " X 50'

0.92 CIR 12" X 36'

0.09 CON 36" X 22'

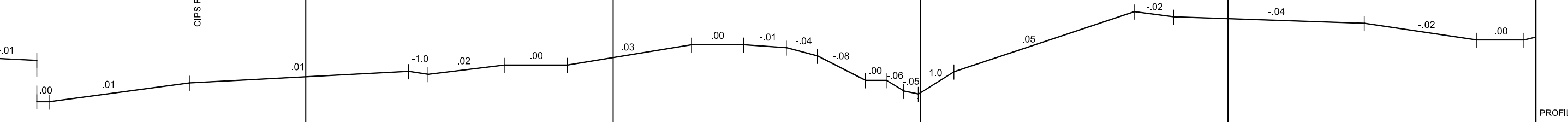
0.97 CIR 24" X 24'

0.00 CMP 36" X 20'

0.30 CIR 24" X 24'

0.97 UNK 24" X 46'

1200N 313640R SS 0.02  
 CIPS RD (500 E) 292627R F/L 0.65  
 400E 292628X SS 0.85  
 1300N 292629E SS 0.20  
 PVT 292631F 0.75  
 MAIN 292632M F/L 0.90  
 NORTH 292633U SS 0.00  
 PVT 292634B 0.70  
 200E 292635H SS 0.95  
 PVT 292636P 0.25  
 PVT 292637W 0.80



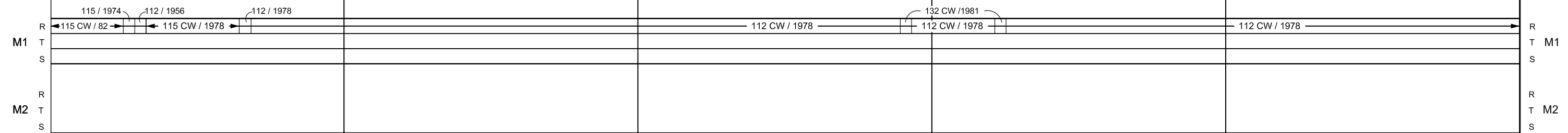
PROFILE PROFILE

ALIGNMENT ALIGNMENT

1/2" 1/2"  
 .01  
 1°-57' .15  
 1°-28' .23

1/2"  
 .50  
 0°-09' .60

AUTHORIZED SPEEDS 40 AUTHORIZED SPEEDS



M1  
 T M1  
 S  
 M2  
 T M2  
 S

← TO INRD JCT.  
 EFFINGHAM SUBDIVISION

1" = 1800'  
 JANUARY 2015

TO EFFINGHAM  
 MP 160.00 - 165.00  
 PG 02 - 05 →

165 166 167 168 169 170

8720+03 USGS EL. T.R. 583.6 5274 8772+77 5281 8825+58 5280 8878+38 USGS EL. T.R. 587.6 5277 8931+15 5280 8983+95

JASPER CO.  
EFFINGHAM CO.

DIETERICH  
166.6

0.45 CMP 30" X 18"  
0.50 CON 24" X 40"  
0.59 CON 24" X 40"  
0.60 CMP 24" X 24"

TO: MP 165.90 NO.10

0.30 CON 36" X 48"

BR 166.40 - 65'  
DIETERICH CREEK TIM

0.73 CON 36" X 60"

8878+38

BR 168.10 - 26'  
DRAIN TIM

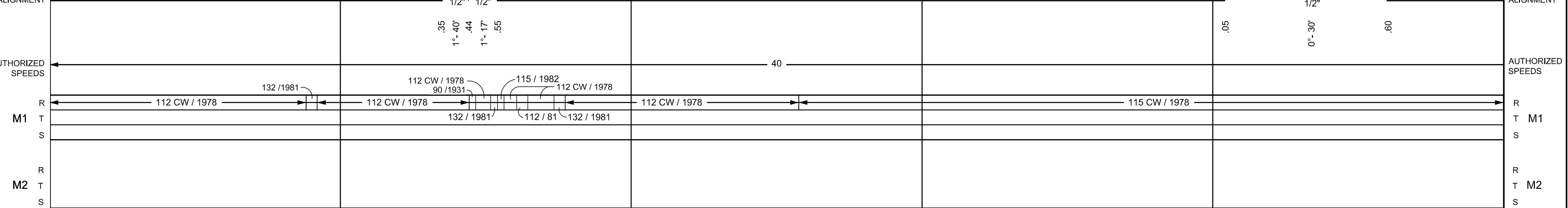
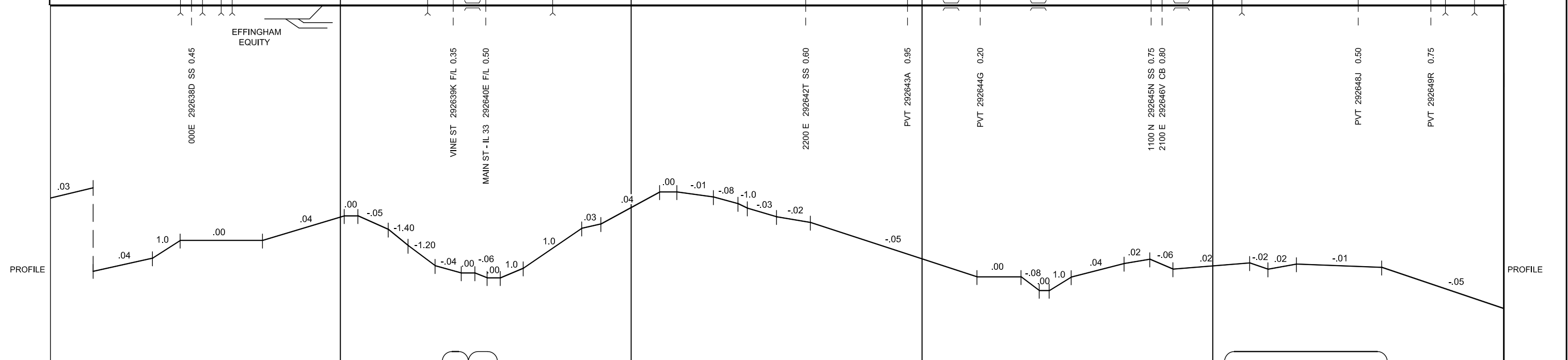
BR 168.40 - 70'  
BISHOP CREEK BRANCH TIM

8931+15

BR 168.80 - 26'  
DRAIN TIM

0.10 CMP 24" X 30"

0.80 CON 60" X 60"  
0.90 CON 24" X 40"



170

171

172

173

174

175

8983+95

9036+69

9089+29

9142+05

9194+82

9244+79

5274

5260

5276

5277

4997

USGS EL.  
T.R. 583.5

USGS EL.  
T.R. 592.4

EVERS

BR 170.40 - 195'  
LITTLE SALT CREEK TIM

BR 171.40 - 26'  
DRAIN TIM

BR 172.20 - 26'  
DRAIN TIM

BR 172.50 - 39'  
DRAIN TIM

BR 173.30 - 26'  
DRAIN TIM

0.00 CIR 24" X 36"  
0.10 CON 36" X 66"

0.04 CIR 18" X 36"

0.70 (2)CMP 36" X 30"

0.90 CON BX 11' x 11' x 23'

0.09 CON 36" X 50"  
0.10 CON 36" X 34'

0.72 CON 30" X 24"  
0.73 CMP 24" X 20'

0.98 CON 24" X 30"  
0.99 CMP 36" X 30'

0.97 CMP 30" X 40'

0.30 CMP 30" X 45'

0.60 CIR 24" X 24'

0.70 CON 24" X 32'

0.90 CIR 24" X 36'

BISHOP RD 292650K SS 0.00

1950 E 292651S SS 0.70

PVT 292652Y 0.95

1250 N 292653F SS 0.20

1900 E 292654M SS 0.40

PVT 292655U 0.55

PVT 292656B 0.85

1800 E 292657H SS 0.20

1775 E 292658P F/L 0.45

1750 E 292659W SS 0.70

1700 E 292662E SS 0.25

1650 E 292663L SS 0.75

1600 E 292665A SS 0.25

PVT 292667N 0.50

PVT 292668V 0.60

PVT 292669C 0.70

PROFILE

PROFILE

ALIGNMENT

ALIGNMENT

AUTHORIZED SPEEDS

AUTHORIZED SPEEDS

M1

M1

M2

M2

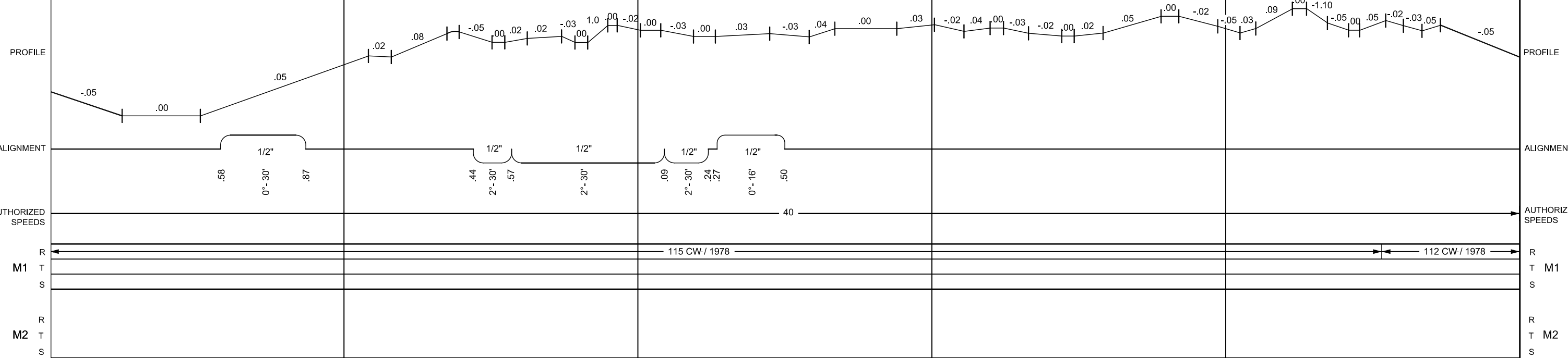
115 CW / 1978

112 CW / 1978

← TO INRD JCT.  
EFFINGHAM SUBDIVISION

1" = 1800'  
JANUARY 2015

TO EFFINGHAM →  
MP 170.00 - 175.00 PG 04 - 05



175

176

9244+79

9291+35

4656

BR 175.20 - 116'  
DRAIN TIM

BR 175.70 - 231'  
SALT CREEK TIM

0.80 CIR 24" X 60'  
0.84 CON 36" X 72'

0.00 CMP 24" X 30'

TO MP 176.60 NO.10  
0.60 CON 36" X 26'

TO MP 176.90 NO.10  
G&W

EFFINGHAM  
176.9

CHAMPAIGN SUB  
TO NEW ORLEANS

CSX INTERCHANGE

PVT 292670W SS 0.40

4TH ST 292672K F/L 0.40

C.J. MORITZ

BANKER ST 292673S F/L 0.65

CHAMPAIGN SUB  
TO CHICAGO

PROFILE

-05

.00

.05

.00

.02

.00

ALIGNMENT

1/2"

.90

8'-00'

AUTHORIZED SPEEDS

112 CW / 1978

112 CW / 1978  
115 / 1998  
112 / 1949

132 CW / 1981

132 CW / 1982  
132 CW / 1981

115 CW / 78

132 / 93

132 CW / 1981

M1

T

S

R

M2

T

S

PROFILE

ALIGNMENT

AUTHORIZED SPEEDS

R

T M1

S

R

T M2

S

← TO INRD JCT.  
EFFINGHAM SUBDIVISION

1" = 1800'  
JANUARY 2015

TO EFFINGHAM  
MP 175.00 - 180.00 → PG 05 - 05